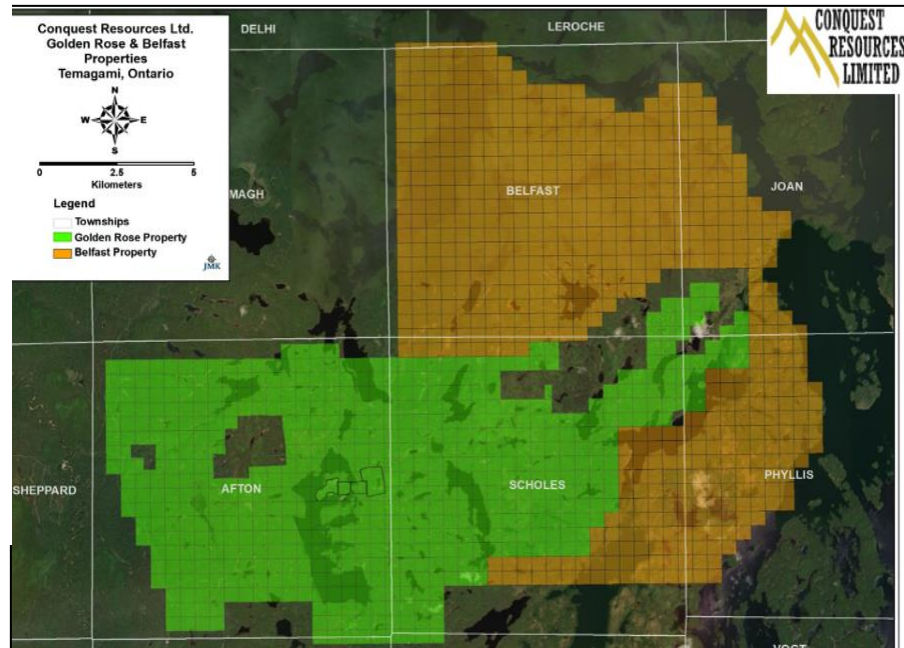


LOCATION

- **Ontario, Canada** – Leading global jurisdiction in mineral exploration & production
- **Sudbury, Ontario**- One of the most prolific Mining Camps in the world.
 - Total ore mined to date is 1.7B tonnes, with 40B pounds of nickel, 36B pounds of copper, 70M ounces of platinum, palladium/gold and 283M ounces of silver recovered
- **Temagami Mining Camp** – One of the most underexplored mining regions in Canada

LAND POSITION

- Large Land package totaling 266.4 km², controlled 100% by Conquest Resources Ltd (65 km North East of Sudbury)
- **Belfast Property:** 611 unpatented claims (13,438 ha/134 km²)
- **Teck Mag Property:** 618 unpatented mining claims (12,896 ha/128 km²) & 27 leased mining claims



BELFAST COPPER PROJECT

- **Belfast Property**- Centered on Belfast Township and located on the edge of the Temagami Magnetic Anomaly
- Processing of geophysical data collected by the VTEM MAX airborne survey has identified 25 conductive anomalies.
- Conquest Resources will utilize geophysical and geochemical data to explore for VMS, IOCG and Copper-Nickel-PGE deposits similar to the past producing Copperfield's deposit.
- A Phase 1 drill campaign is set to begin, testing numerous geophysical targets as well as field investigation and ground gravity surveys, which are anticipated to further define IOCG targets.



Belfast – Teck Mag Project, Emerald Lake, Ontario

Exploration for CU-NI-PGE, VMS & IOCG in the Temagami Mining Camp

Targeting: East of Golden Rose Gold Mine, Au-Hosting IF, VMS

TECK MAG EXPLORATION

- Gold mineralization occurs mainly as free gold associated with quartz and coarse pyrite crystals
- Historical records indicate that there is good potential of additional zones of mineralization with many high-grade intersections
- **Conquest Resources Ltd. 2020-21 Drilling:**
 - 3,522 metres in 8 diamond drill holes completed to date
 - Multiple intersections of significant gold mineralization
 - Drilling continues to the east along the host iron formation over a strike length of ~8km.

Drill Hole	From (m)	To (m)	Length (m)	Grade (Au g/t)
GRW20-01	650.85	651.65	0.80	2.90
GR20-01	145.00	156.10	11.10	2.15
(Including)	145.00	146.00	1.00	11.20
(Including)	151	152	1.00	3.53
(including)	155	156.1	1.10	4.44
	168.73	169.13	0.40	6.33
	193.35	196.17	2.82	2.03
(Including)	194.77	195.67	0.90	4.99
GR20-03	298	299	1	3.53
GR20-04	256.25	256.75	0.5	5.21
	271	274.75	3.75	5.03
(Including)	271	271.5	0.5	15.2
(Including)	274.25	274.75	0.5	20.4

CAPITAL STRUCTURE

Shares Outstanding: 127.2M

Warrants: 14.7M

Options: 5.3M

Cash & Securities: \$4.9M

MANAGEMENT

Tom Obradovich – President & CEO

Kevin Stevens, P.Geo – Chief Geophysicist

Tong Yin, CPA – CFO

Joerg Kleinboeck, P.Geo – VP of Exploration

BOARD OF DIRECTORS

Tom Obradovich

John F. Kearney, MBA, CS

Robert J. Kinloch

Neil J.F. Steenberg, J.D.

Jamie Levy

Peter Palframan, CPA

Gerald J. Gauthier, P. Eng

CONTACT

Tom Obradovich

President and CEO

416-985-7140

tobradovich@conquestresources.com

Frank Gagnon

Investor Relations

705-288-5300

fgagnon@conquestresources.com