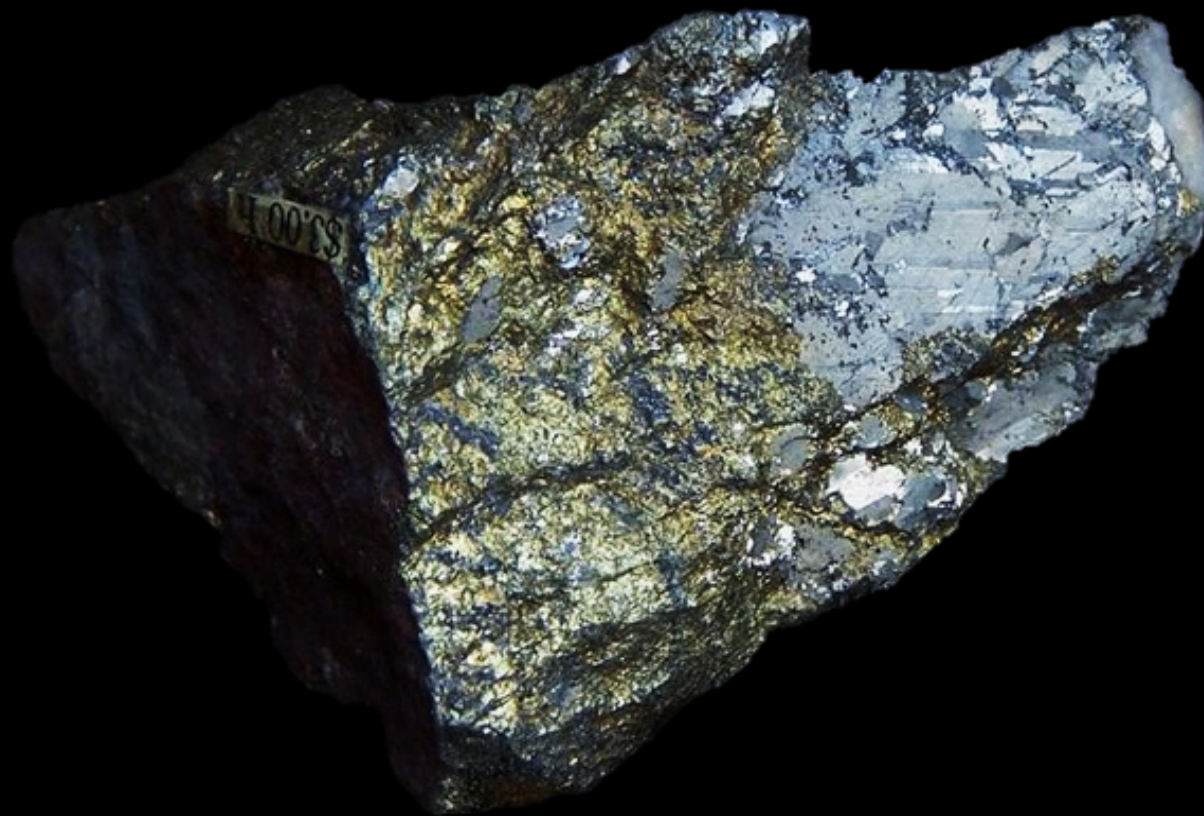


EXPLORATION FOR HIGH-GRADE BASE & PRECIOUS METAL DEPOSITS IN CANADA'S MOST PROLIFIC MINING DISTRICTS



TOM OBRADOVICH
PRESIDENT AND CEO

DISCLAIMER



THIS DOCUMENT MAY CONTAIN CERTAIN FORWARD-LOOKING INFORMATION WHICH INVOLVES KNOWN AND UNKNOWN RISKS AND UNCERTAINTIES.

THIS FORWARD-LOOKING INFORMATION INCLUDED, OR MAY BE BASED UPON, ESTIMATES, FORECASTS, AND STATEMENTS AS TO MANAGEMENT'S EXPECTATIONS WITH RESPECT TO, AMONG OTHER THINGS, THE SIZE AND QUALITY OF THE COMPANY'S MINERAL RESOURCES, FUTURE TRENDS FOR THE COMPANY, PROGRESS IN DEVELOPMENT OF MINERAL PROPERTIES, THE ISSUE OF PERMITS, FUTURE PRODUCTION AND SALES VOLUMES, CAPITAL AND MINE PRODUCTION COSTS, TRANSPORTATION AND SHIPPING COSTS, DEMANDS AND MARKET OUTLOOK FOR METALS, FUTURE METAL PRICES AND TREATMENT AND REFINING CHARGES, GENERAL MARKET CONDITIONS, ACCESS TO CAPITAL AND THE FINANCIAL RESULTS OF THE COMPANY.

ACTUAL RESULTS MAY DIFFER MATERIALLY FROM THOSE EXPRESSED OR IMPLIED BY FORWARD-LOOKING STATEMENTS. HISTORICAL ESTIMATIONS OF RESOURCES AND RESERVES MAY NOT COMPLY IN ALL RESPECTS WITH THE STANDARDS CONTAINED IN NATIONAL INSTRUMENT 43-101 "STANDARDS OF DISCLOSURE FOR MINERAL PROJECTS" OF THE CANADIAN SECURITIES ADMINISTRATORS. MINERAL RESOURCES THAT ARE NOT MINERAL RESERVES DO NOT HAVE DEMONSTRATED ECONOMIC VIABILITY. INFERRED MINERAL RESOURCES ARE CONSIDERED TOO SPECULATIVE GEOLOGICALLY TO HAVE ECONOMIC CONSIDERATIONS APPLIED TO THEM THAT WOULD ENABLE THEM TO BE CATEGORIZED AS MINERAL RESERVES. THERE IS NO CERTAINTY THAT MINERAL RESOURCES WILL BE CONVERTED INTO MINERAL RESERVES.

ALL INTERSECTION WIDTHS REPORTED ARE CORE WIDTHS, UNLESS OTHERWISE STATED.

WHY INVEST IN CONQUEST?

NEW MANAGEMENT, EXPERIENCED IN EXPLORATION

Decades of experience discovering mineral deposits domestically and internationally

HIGH-GRADE MASSIVE SULPHIDE CU FOCUS

Global Copper production set to increase as result of a surge in demand for battery metals

LOCATION OF FLAGSHIP BELFAST TECK-MAG PROPERTY

Primary exploration area within the southern portion of the Abitibi Greenstone Belt

SCALE OF PROPERTY

Large package of land totaling over 300 sq. km, owned 100% by Conquest Resources Ltd.

UNDEREXPLORED PROPERTY

Regional, Methodical Exploration applied to the area for the first time

DIVERSIFIED APPROACH

Exploration for Cu-Ni-PGE, VMS, IOCG and Fe hosted Au deposits

TIGHT CAPITAL STRUCTURE/TREASURY

C\$4M Cash position – Fully Funded 10,000m Drill Program – 134M shares I&O



COPPER'S ROLE IN A LOW CARBON ECONOMY



It is expected that **Copper** will play a critical role in a low carbon economy for its extensive used in renewable energy and electric vehicle (EV) applications

Copper has the greatest thermal & electrical conductivity of any non-precious metal

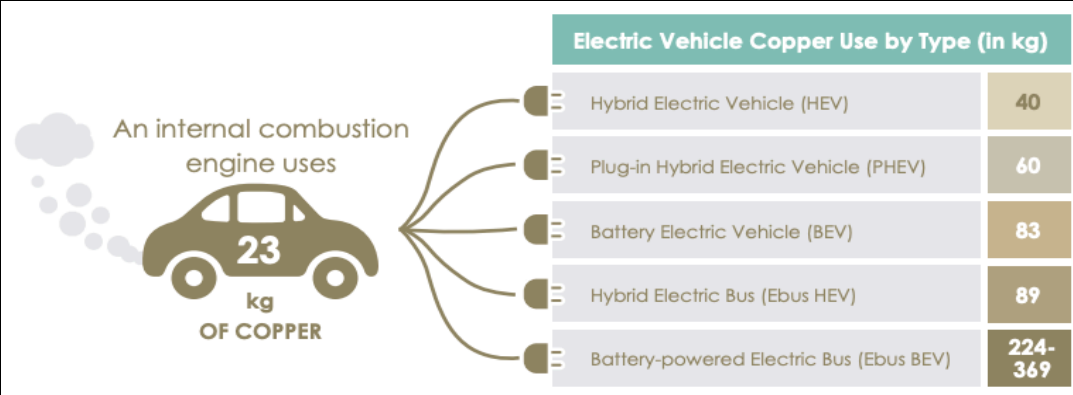
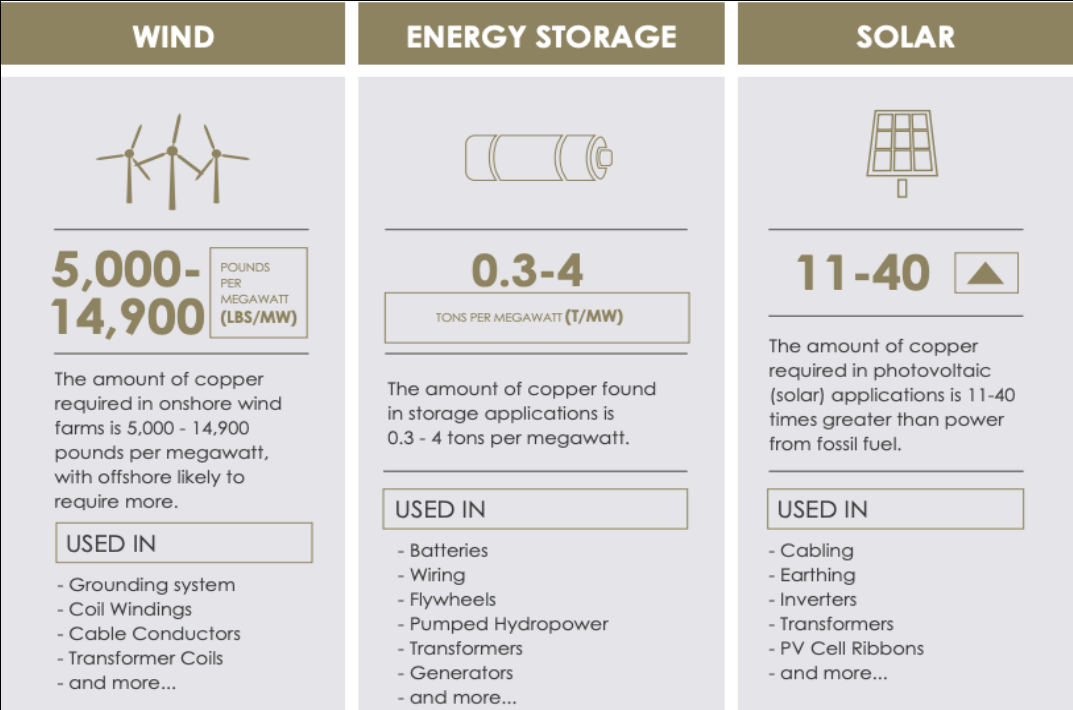
Renewable energy technologies required more copper per megawatt of new capacity compared to fossil fuel or nuclear derived energy by a factor of 2-6 times

The addition of just 1kg of **Copper** used to improve energy efficiency has an environmental return of 100-1,000 times over the life of the equipment

EV's are anticipated to be a major contribution to a low-carbon economy, which will require significantly more copper than fossil fuel-powered vehicles.

By 2027, it is expected that 27 million EV's will be on the road, pushing Copper demand up from 185,000 tonnes (2017) to 1.74 million tonnes

Source: Feeco International



NEW DISCOVERIES NEEDED

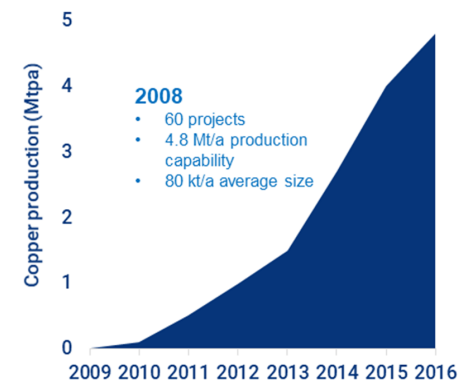
"Copper will play a pivotal role in the renewable energy transition, which is set to grow demand for the base metal by an average of ~2% per year over the next 20 years.

Without additional substantial investment, production will decline from 2024 onwards. Coupled with demand growth, this decline in output will lead to a theoretical shortfall of around 16 Mt by 2040."

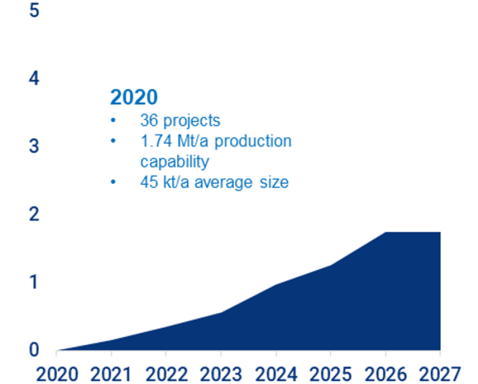
Source: Wood Mackenzie

Copper supply could be constrained by a shortage of advanced projects

Production profile for probable copper mine projects in 2008

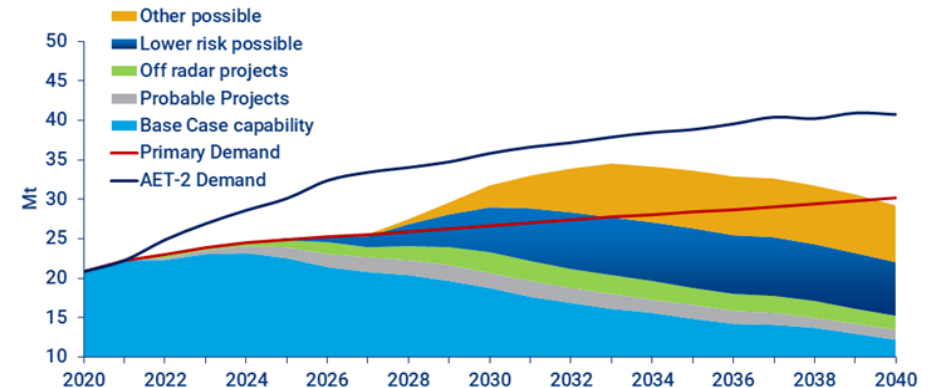


Production profile for probable copper mine projects in 2020



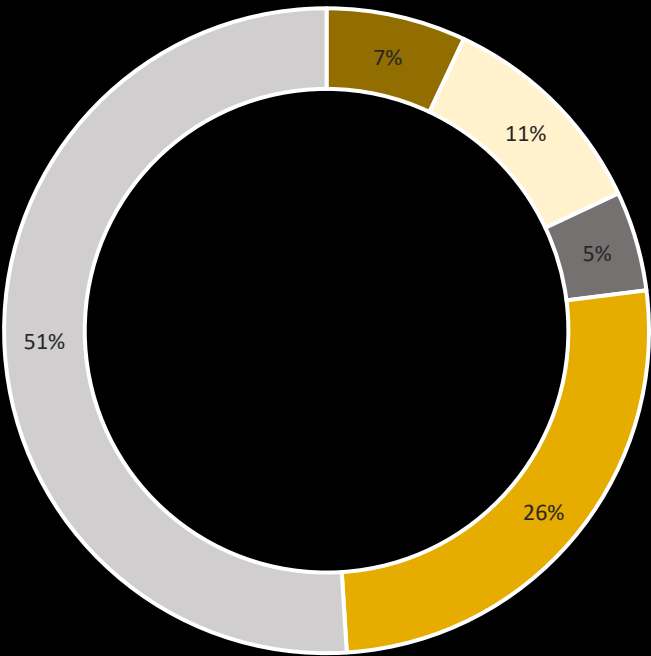
Copper demand growth puts supply elasticity under stress in an accelerated energy transition (AET-2) scenario

Primary copper demand scenarios versus mine supply potential



SHARE STRUCTURE

SHARE STRUCTURE	
Basic Shares Issued & Outstanding	134,637,106
Warrants	13,052,631
Options	10,725,000
Cash Position	\$4,000,000
KEY SHAREHOLDERS	
Kirkland Lake Gold	
Inventus Mining	
Rousseau Asset Management	
Tom Obradovich	President and CEO of Conquest Resources Ltd.
John F Kearney	President and CEO of Buchans Resources Ltd.
Rob McEwen	Chairman and Chief Owner of McEwen Mining
Northfield Capital	
Pat Dicapo	CEO and Founder of PowerOne Capital Markets
Eric Sprott	CEO of Sprott Asset Management
Jamie Levy	President and CEO of Generation Mining Ltd.



- Kirkland Lake Gold
- Management and Board
- Inventus Mining
- Institutional & Family Office
- Retail

STOCK STATS & CAPITALIZATION



1 YEAR PRICE CHART



Representative data provided by TMX Money, up to date as of 28th May 2021 - See <https://money.tmx.com/en/advanced-chart/CQR> for accurate interactive graphics

	52 WEEK HIGH	52 WEEK LOW	MARKET CAP	CLOSE PRICE (28 TH MAY 2021)
CONQUEST RESOURCES LIMITED (XTSX:CQR)	\$ 0.36	\$ 0.06	\$ 18,849,194	\$ 0.14

Data reported on 28th May 2021 by www.refinitiv.com

BOARD OF DIRECTORS



THOMAS OBRADOVICH
President, CEO, Director



JOHN F. KEARNEY
MBA, CS, Chairman, Director



JAMIE LEVY
Director



PETER PALFRAMAN
CPA



TERENCE MCKILLEN
M.A., M.Sc.

BOARD OF DIRECTORS

THOMAS OBRADOVICH *President, CEO, Director*

- ❖ Over 35 years of experience in mining, exploration and development
- ❖ Key Member behind the Fruta Del Norte deposit which was sold to Kinross for US\$1.2 billion in 2008
- ❖ Co-founder of Canadian Royalties Inc., and was involved in the discovery and development of the Raglan South Nickel Belt
- ❖ Developed the Young-Davidson Mine, upgraded and doubled the resource which is now producing 200,000oz Au/year for Alomos Gold Inc.
- ❖ Director and a member of the Special Committee at Dalradian Resources, which was privatized by Orion Mine Finance for over \$550 million.

JOHN F. KEARNEY *Chairman, MBA, CS*

- ❖ Over 40 years of experience in the mining industry and is the current Chairman and CEO of Buchans Resources Ltd.
- ❖ Current Director/Senior Officer of Labrador Iron Mines Holdings Ltd, Xtierra Inc. and Anglesey Mining Plc.
- ❖ Director of the Mining Association of Canada and is the immediate Past President of the Northwest Territories and Nunavut Chamber of Mines

PETER PALFRAMAN *CPA, Chair of Audit Committee*

- ❖ Served as an officer of public companies for a period in excess of 25 years.
- ❖ Former Accountant and Audit Supervisor at a predecessor of Deloitte & Touche provided audit and consulting services to clients in Africa, UK, Europe and Canada.

TERRENCE N. MCKILLEN *M.A., M.Sc.*

- ❖ Professional geologist with over 50 years of mineral exploration and development experience in Ireland, Europe, Africa, Southeast Asia, as well as North, Central and South America.
- ❖ Current Director of Xtierra Inc., Minco Exploration Plc and Buchans Resources Ltd.

JAMIE LEVY

- ❖ Over 25 years in financing and management of Canadian mining companies.
- ❖ Current President, CEO and Director of Generation Mining
- ❖ Former CEO of Pine Point Mining which was acquired by Osisko Metals. Formerly Vice President of Pinetree Capital.

MANAGEMENT TEAM

THOMAS OBRADOVICH *President, CEO, Director*

- ❖ Over 35 years of experience in mining, exploration and development
- ❖ Key Member behind the Fruta Del Norte deposit which was sold to Kinross for US\$1.2 billion in 2008
- ❖ Co-founder of Canadian Royalties Inc., and was involved in the discovery and development of the Raglan South Nickel Belt
- ❖ Developed the Young-Davidson Mine, upgraded and doubled the resource which is now producing 200,000oz Au/year for Alamos Gold Inc.
- ❖ Director and a member of the Special Committee at Dalradian Resources, which was privatized by Orion Mine Finance for over \$550 million.

KEVIN STEVENS *P. Geo, Chief Geophysicist*

- ❖ Over 25 years of experience in mineral exploration, contributing to the discovery of 14 mineral deposits in the Sudbury Igneous Complex, the Mid-Continent Rift region, NW Ontario, and gold exploration success in the Abitibi Gold Belt.
- ❖ Co-recipient of the **PDAC's Prospectors of the Year Award 2004**, for the discovery and economic significance of the Nickel Rim South deposit, Sudbury and the **NWOPA's Bernie Schneider Discovery of The Year Award 2014**, for the discovery of the Sunday Lake PGE deposit, Thunder Bay, Ontario.
- ❖ Co-founder of Transition Metals Corp., a publicly traded, multi-commodity exploration company, and its privately held parent company HTX Minerals Corp, that he co-founded in 2007.

JOERG M. KLEINBOECK *P. Geo, Vice President of Exploration*

- ❖ Over 20 years of experience in mineral exploration where he has managed early through to advanced staged projects within Canada and the United States.
- ❖ Active in the Temagami Mining Camp since 2000 where he has helped to advance projects (New Age Metal Corp's nearby River Valley PGM Project/Lismer's Ridge Extension Deposit)
- ❖ Involved with the Golden Rose Gold Mine Property in 2010/2011

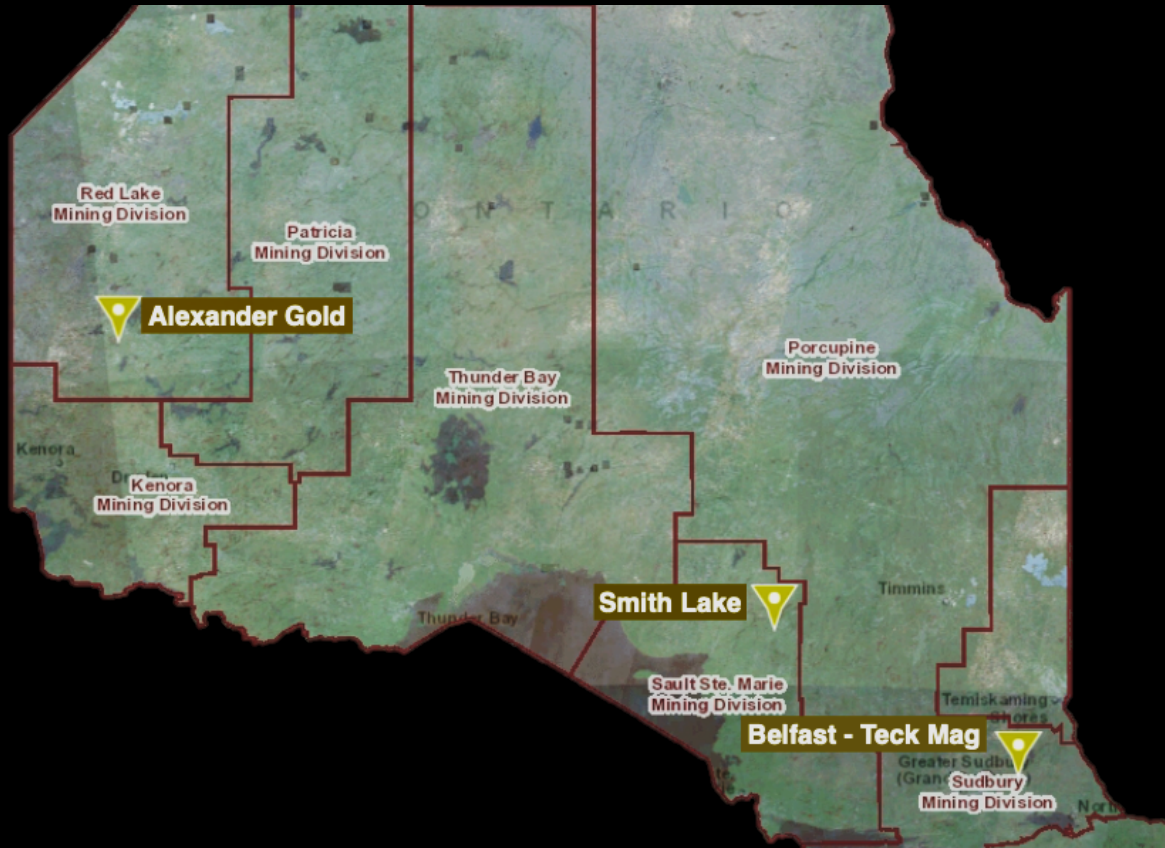
TONG YIN *CPA, Chief Financial Officer*

- ❖ Over 20 years of accounting, finance and management experience in the mining, manufacturing and distribution sectors
- ❖ Financial Advisor for Generation Mining Limited and Generation PGM Inc
- ❖ Provided financial management consulting services to several small to large international companies including; Torex Gold Resources Inc, RB Energy Inc (formerly Canada Lithium Corp.) and Tewoo ERDC

JANICE MALMHOLT *Corporate Secretary*

- ❖ Corporate Secretary for Buchans Resources Limited in 2014
- ❖ Previously served as an Executive Assistant for Labrador Iron Mines Holdings Limited

CONQUEST'S STRATEGICALLY LOCATED PROJECTS IN ONTARIO



BELFAST - TECK MAG PROJECT (*EMERALD LAKE, ON*)

- ❖ High-Grade Copper-Nickel-PGE, VMS and IOCG Project strategically located in Temagami Mining Camp
- ❖ Road accessible, in southern portion of prolific Abitibi Greenstone Belt
- ❖ Adjacent to former producing Copperfield's mine

ALEXANDER GOLD PROJECT (*RED LAKE, ON*)

- ❖ High-Grade Gold Exploration project situated adjacent to Evolution Mining's Red Lake Gold Mine (formerly Goldcorp)
- ❖ Target is an extension, or repetition of the mineralization discovered at the Red Lake Gold Mine.

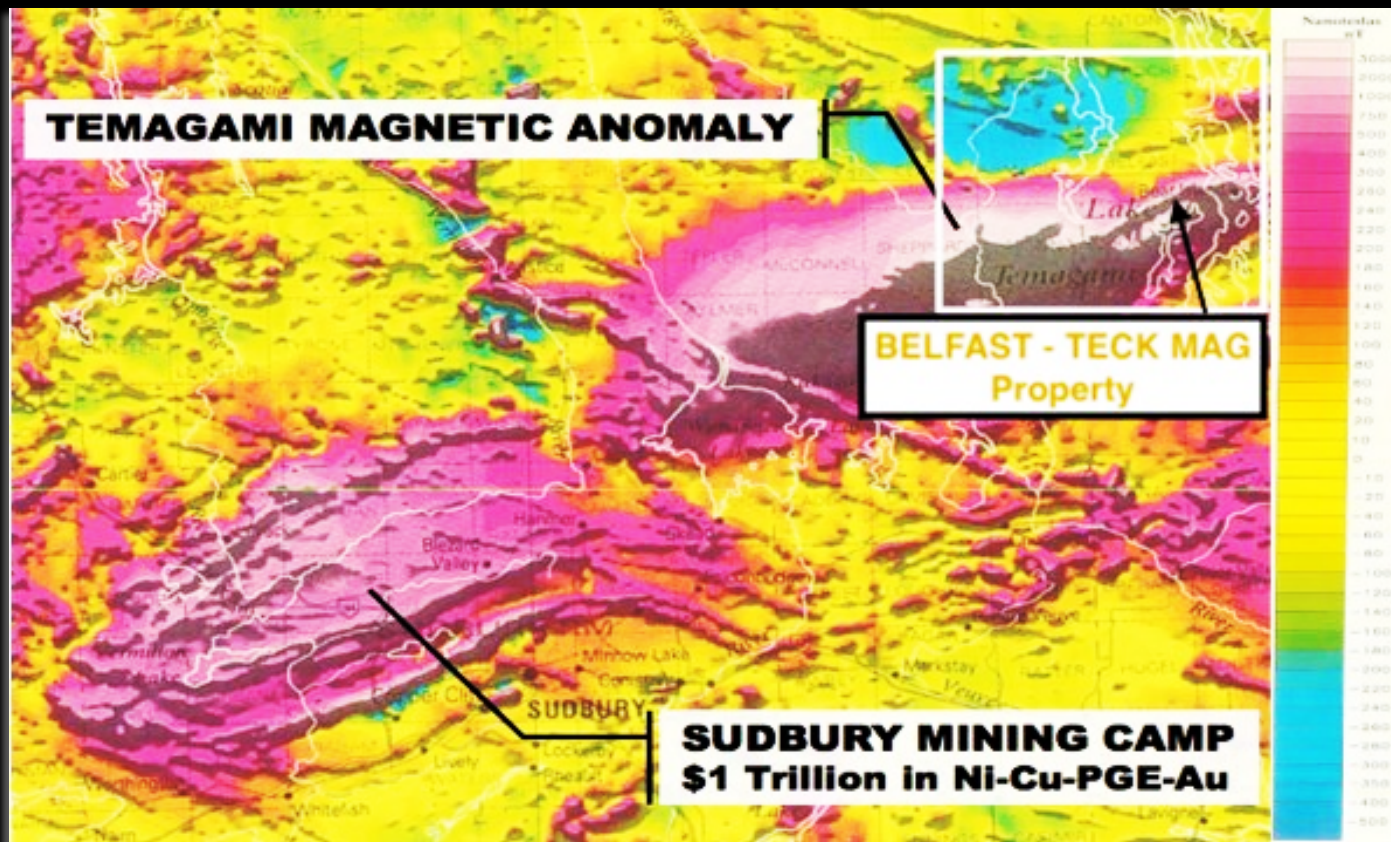
SMITH LAKE PROJECT (*RENABIE, ON*)

- ❖ Situated within the Missinabie-Goudreau greenstone belt
- ❖ Property is contiguous with the former international Corona Resources Renabie Gold Mine

CONQUEST'S STRATEGY:

- ❖ Explore 100% owned mineral properties through drill testing and field investigation
- ❖ Using new interpretation and technology to test high potential mineral endowed areas in favorable jurisdictions

BELFAST-TECK MAG: CONDUCTIVE ZONES IDENTIFIED



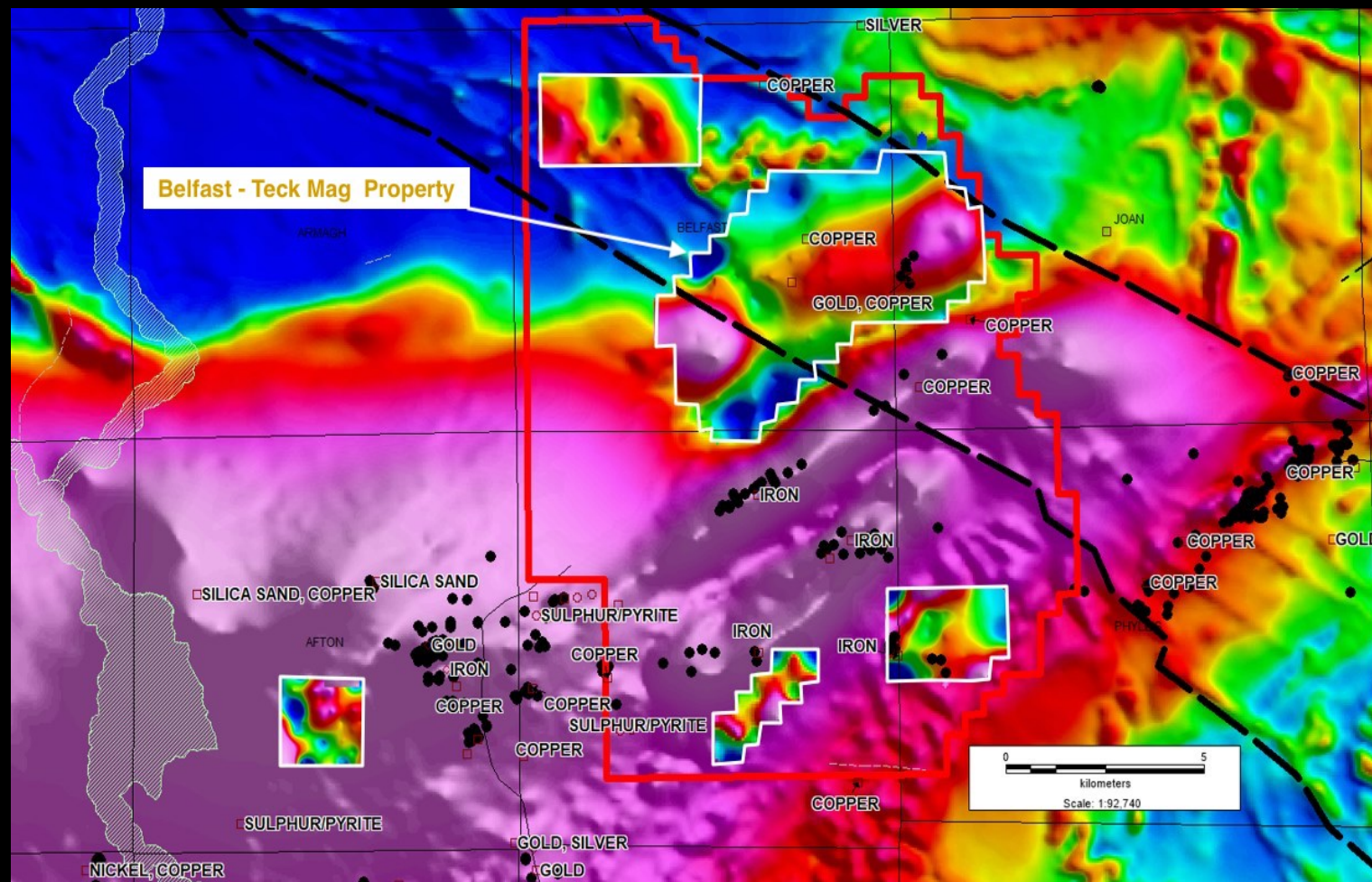
- ❖ <50 km northeast of the world-class Sudbury Mining Camp, and in the midst of very large smelters; Vale – Copper Cliff Complex and Glencore's Sudbury Smelter.
- ❖ The property is located above the Temagami Magnetic Anomaly, a large magnetic, dense and conductive anomaly that we feel is related to the Sudbury Igneous Complex.
- ❖ An Emerging Trend of exploration programs are taking place over the Temagami Magnetic Anomaly; Inventus Mining's Sudbury 2.0 Project, Transition Metal's Aylmer IOCG Project, Macdonald Mine's SPJ Project and North American Nickel's Post Creek/Halycon Project.

THE TEMAGAMI MINING CAMP AREA IS CONSIDERED UNDEREXPLORED FOR TWO MAIN REASONS:

- ❖ A Land Caution prohibited mining and exploration lasting twenty years until a resolution was reached in the late 1990's
- ❖ A veneer of Nipissing diabase and Huronian-aged sedimentary rocks cover the underlying favourable Temagami Greenstone Belt, a southerly exposure of the metal-rich Abitibi Subprovince.

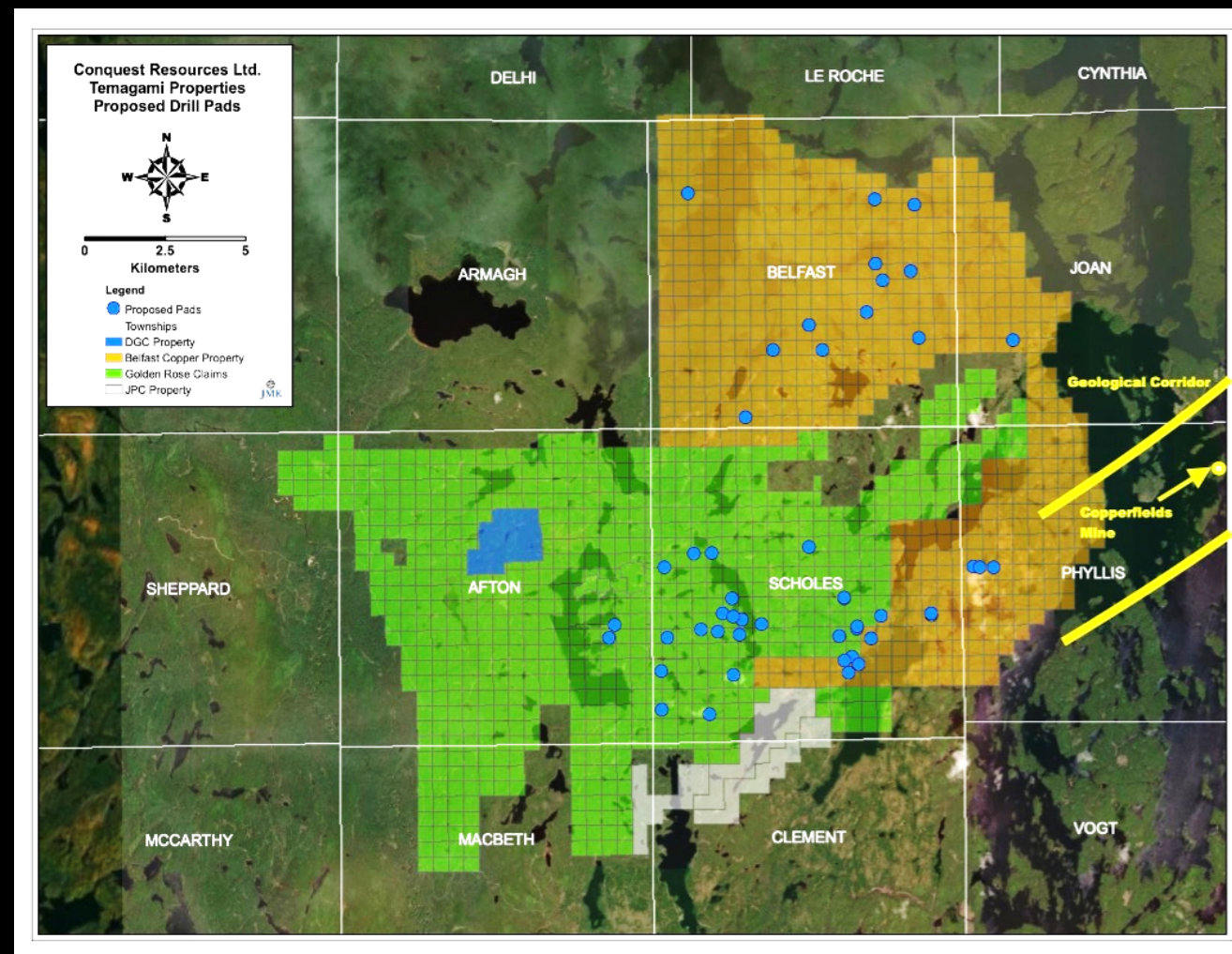
BELFAST-TECK MAG: CONDUCTIVE ZONES IDENTIFIED

- ❖ To date, we have completed a 255-site Ground Gravity Survey on 5 Grids, as well as a 2,319 line km VTEM MAX airborne survey to identify conductive bodies beneath the cover rock.
- ❖ Assessment of the Geophysical data has identified magnetic and conductive responses which may represent; VMS (CU) - Mafic Intrusive Deposits (Cu-Ni-PGE) and BIF(Au) in the southern portion of Scholes and Phyllis Townships
- ❖ Of particular interest in the north part of the project area, are three discrete coincident magnetic and gravity responses identified within a large crosscutting structural corridor (Belfast and Joan Townships)

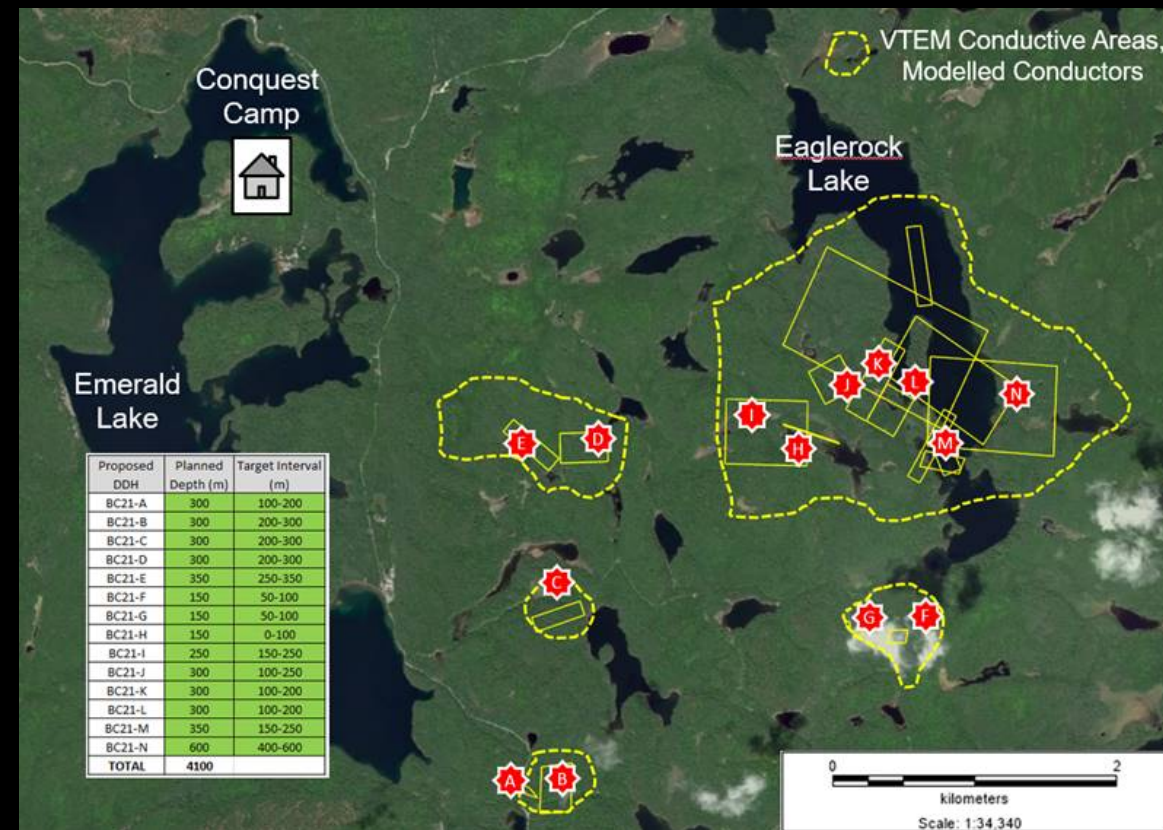
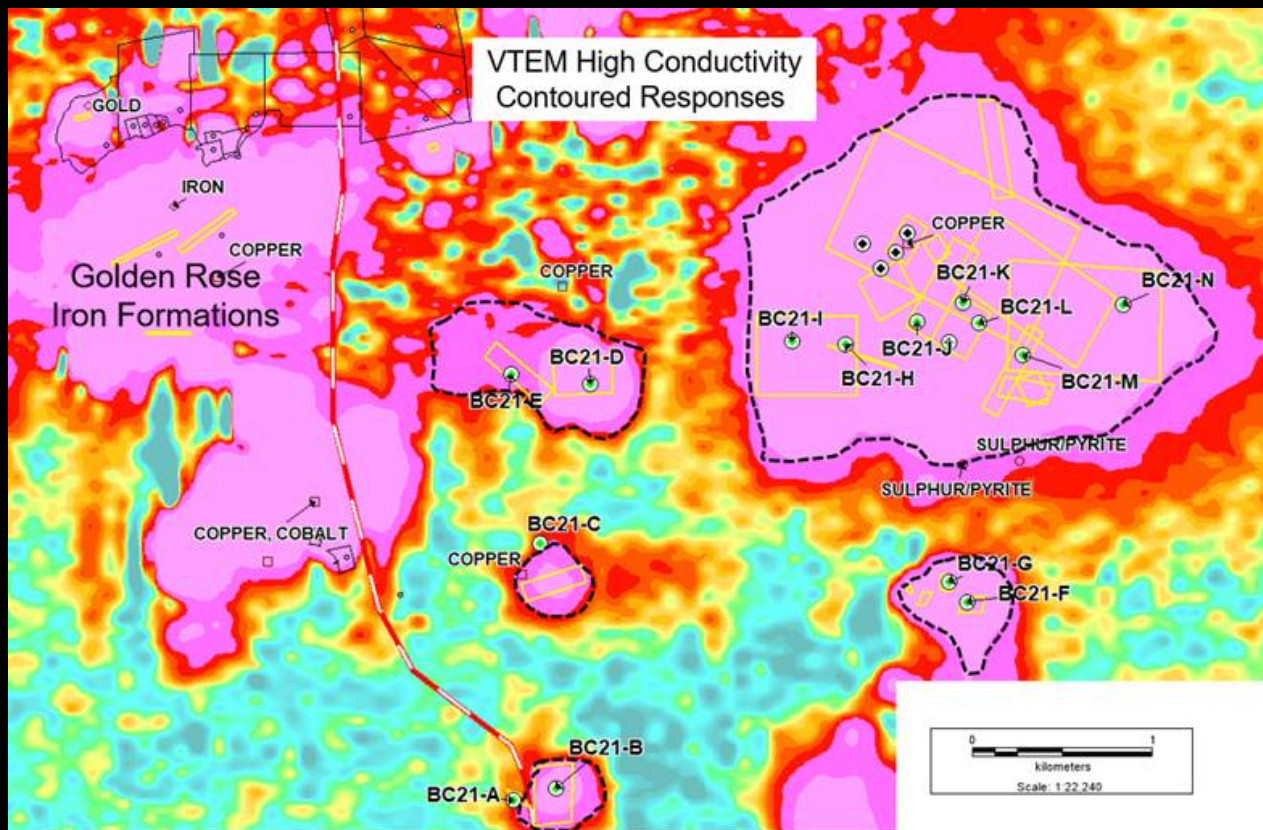


BELFAST-TECK MAG: FUNDED FOR 10,000M DRILL PROGRAM

- ❖ Large, 300 sq/km land package situated adjacent to the former producing Teck Resources Copperfield's Mine.
- ❖ Fully funded for a 10,000m Drill Program, testing 30 high-priority geophysical targets on strike and in the same geological corridor as the Copperfield's Mine.
- ❖ Target anomalies in the north portion of our property range in diameter from 0.5km to 1.5km and are located in areas of known Cu/Au occurrences, local anomalous lake sediment geochemistry (PGE's) and underlying structures which may be associated with Olympic Dam style IOCG deposits.

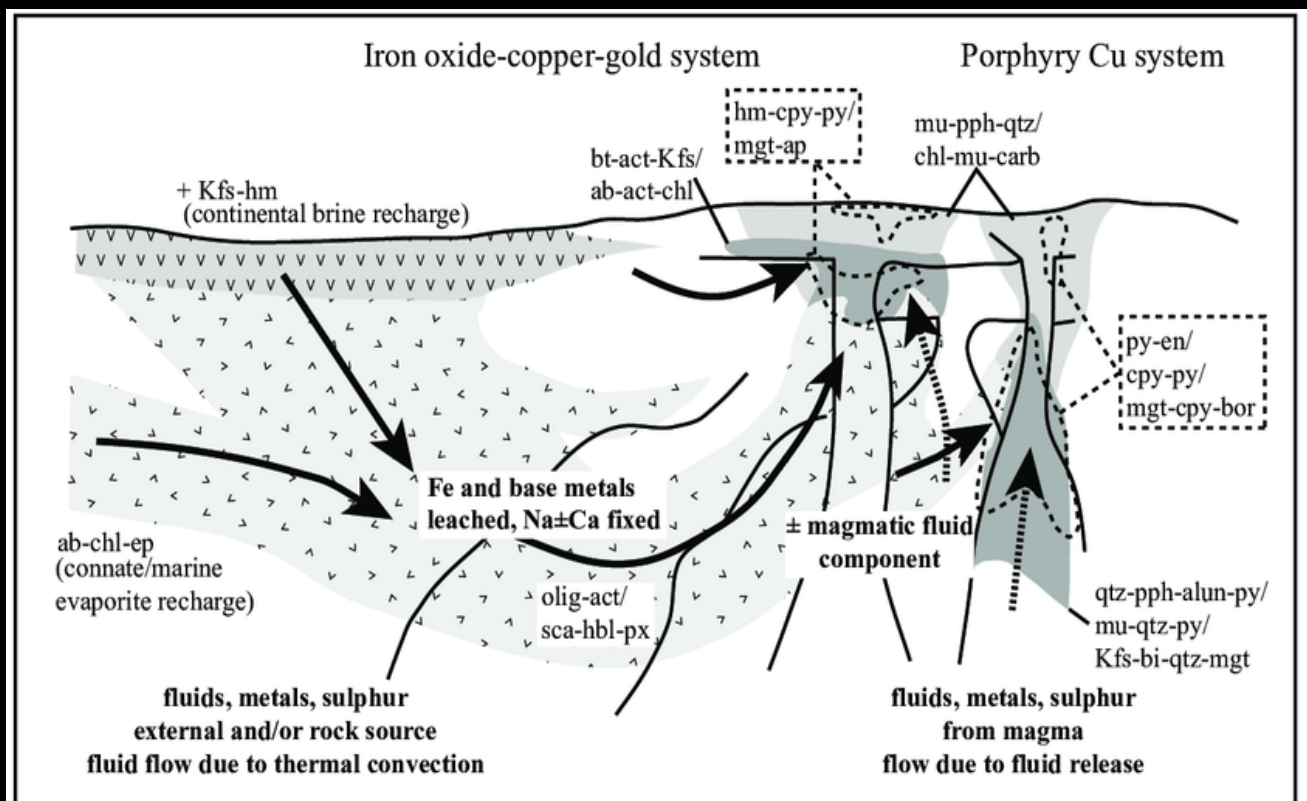


BELFAST-TECK MAG: 2020/2021 PRELIMINARY EXPLORATION



- ❖ Drilling is scheduled to commence in early June 2021 on the northeast and southeast portion of our Property.
- ❖ Program will test for polymetallic mineralization including Copper, Nickel, Platinum/Palladium, Iron hosted Gold, Paleoplacer Gold and IOCG Deposits.
- ❖ Positive results from the Phase 1 Drilling Program will be followed up in a Phase 2 Drilling Program in Q4 2021.

SODA METASOMATISM: A POSSIBLE IOCG DEPOSIT INDICATOR



It has been postulated that the regional soda metasomatism of the area may be related to the Sudbury impact event at 1850 Ma; however, the U/Pb geochronological evidence cited above indicates that later felsic plutonism or more deep-seated carbonatitic or alkalic intrusions at depth could have acted as the driving mechanism for the sodium-rich fluids.

In the Sudbury District, economic interest in these rocks has focused on several small deposits of gold (illustrated on Figure 1), but the characteristics of these deposits in many ways display an affinity with iron oxide-copper-gold (IOCG) deposits found in other parts of the world.

It has been proposed that the former Scadding gold mine, east of the SIC is a modified IOCG deposit (Schandl and Gorton 2007).

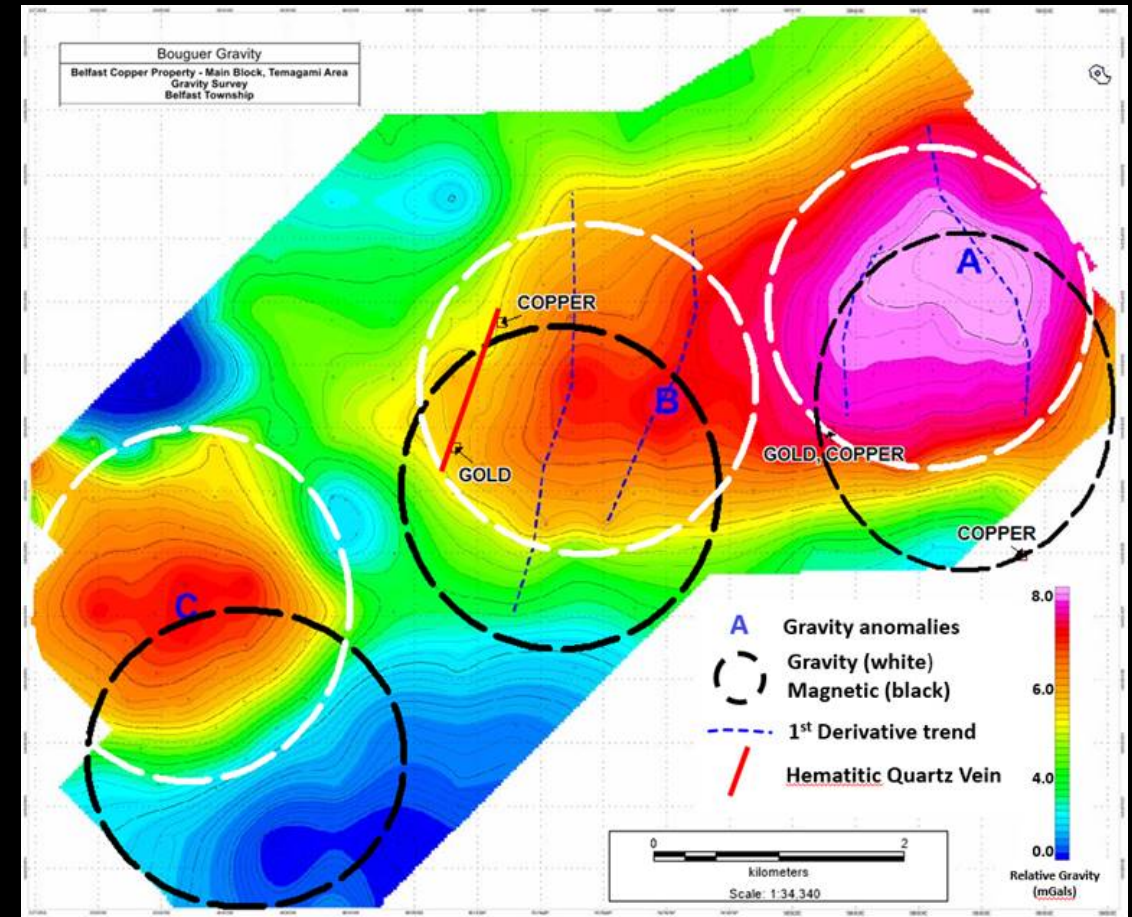
Shared Characteristics include the following:

- Proterozoic in age (most)
- Located along cratonic margins
- Common alterations include sodium, potassium, iron, calcium and silica
- Associated with major fault and/or fracture systems
- Mineralization includes copper and copper-iron sulphides, iron oxide, gold, uranium, silver, cobalt (all variable)
- Elevated levels of rare earth elements (REE)
- Brecciated country rocks

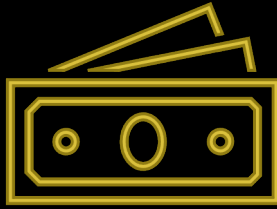
With these factors in mind, it is recommended that prospecting be carried out for potential IOCG deposits in Paleoproterozoic Huronian rocks along the aforementioned arcuate trend of soda-rich rocks as well as in townships northeast of Lake Wanapitei underlain by the Wanapitei aeromagnetic anomaly. This anomaly indicates the presence of an intrusive body up to 5 km deep underlying an area between eastern Lake Wanapitei and western Lake Temagami.

BELFAST-TECK MAG: IOCG INDICATORS

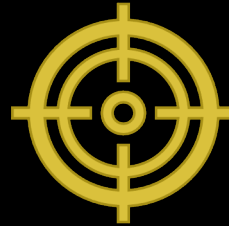
A large hermatitic quartz vein found within the Belfast Township, reveals a strong trend correlation with the gravity 1st derivative trends. This supports a strong structural component coincident with the central and east gravity/magnetic responses which are consistent with Olympic Dam style IOCGS



BELFAST-TECK MAG: NEAR-TERM CATALYSTS



JUNE 2021
TREASURY - C\$4M
Fully-Funded 10,000m
Program to begin



JUNE 2021- AUGUST 2021
Drill testing on high-priority
targets to identify high-grade
mineralization



SEPTEMBER 2021
Interpretation of Drill Results -
Follow up Phase 2 Drilling

UPSIDE POTENTIAL

- ❖ Potential to discover world-class deposits on all targets identified on the Belfast-Teck Mag Property
- ❖ Strategic Land position at the Belfast-Teck Mag property located on strike with the past-producing Copperfields Mine and 50km Northeast of the Prolific Sudbury Mining Camp
- ❖ Opportunity to be part of an Emerging Sudbury 2.0 Trend within the Temagami Mining Camp
- ❖ Optionality of Deposit Types; Magmatic Ni-Cu-PGE's, Iron formation hosted Au, IOCG targets and VMS targets



ALEXANDER GOLD PROJECT - NORTH AMERICA'S HIGHEST-GRADE GOLD CAMP



ALEXANDER GOLD PROJECT: RED LAKE, ONTARIO

UPSIDE POTENTIAL

- ❖ Alexander Property - Situated within 2 KM of more than 28M ounces of gold from past production and current resources within 400 meters of Goldcorp's Far East Zone gold discovery.
- ❖ Conquest's target is an extension of the mineralization at the Red Lake mine, which is claimed by Goldcorp to be the richest gold mine in the world.
- ❖ Stratigraphy under the property remains essentially untested below 700 meters depth.
- ❖ The richest gold bearing ore zones exist below a vertical depth of 1,300 meters in the High-Grade Zone at the Goldcorp Red Lake gold mine, less than 800 meters from the property boundary.

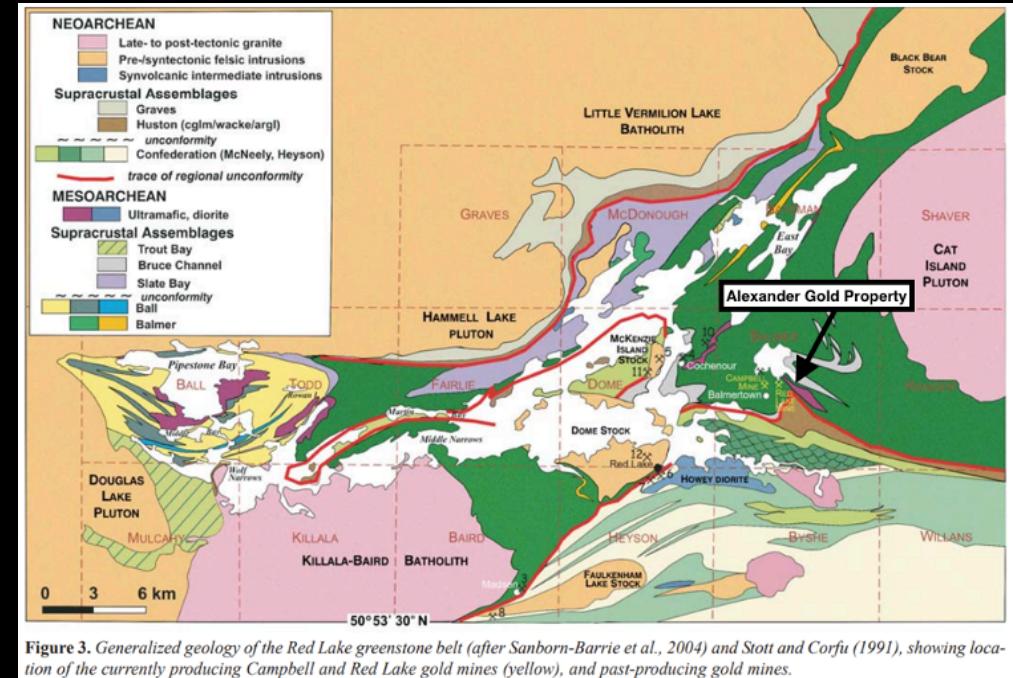


Figure 3. Generalized geology of the Red Lake greenstone belt (after Sanborn-Barrie et al., 2004) and Stott and Corfu (1991), showing location of the currently producing Campbell and Red Lake gold mines (yellow), and past-producing gold mines.

FUTURE WORK

- ❖ Conquest's recommends further exploration work to fully evaluate the mineral potential of the property given its close proximity to world-class gold deposits
- ❖ A property-wide, extensive deep drilling program of 20,000 meters of drilling combined with down-hole electromagnetic and induced polarization geophysics will provide the best opportunity of making a significant gold discovery.
- ❖ Further recommendations have been made to acquire the underlying data of the 2008 airborne geophysical survey by Goldcorp for the purpose of future target generation.

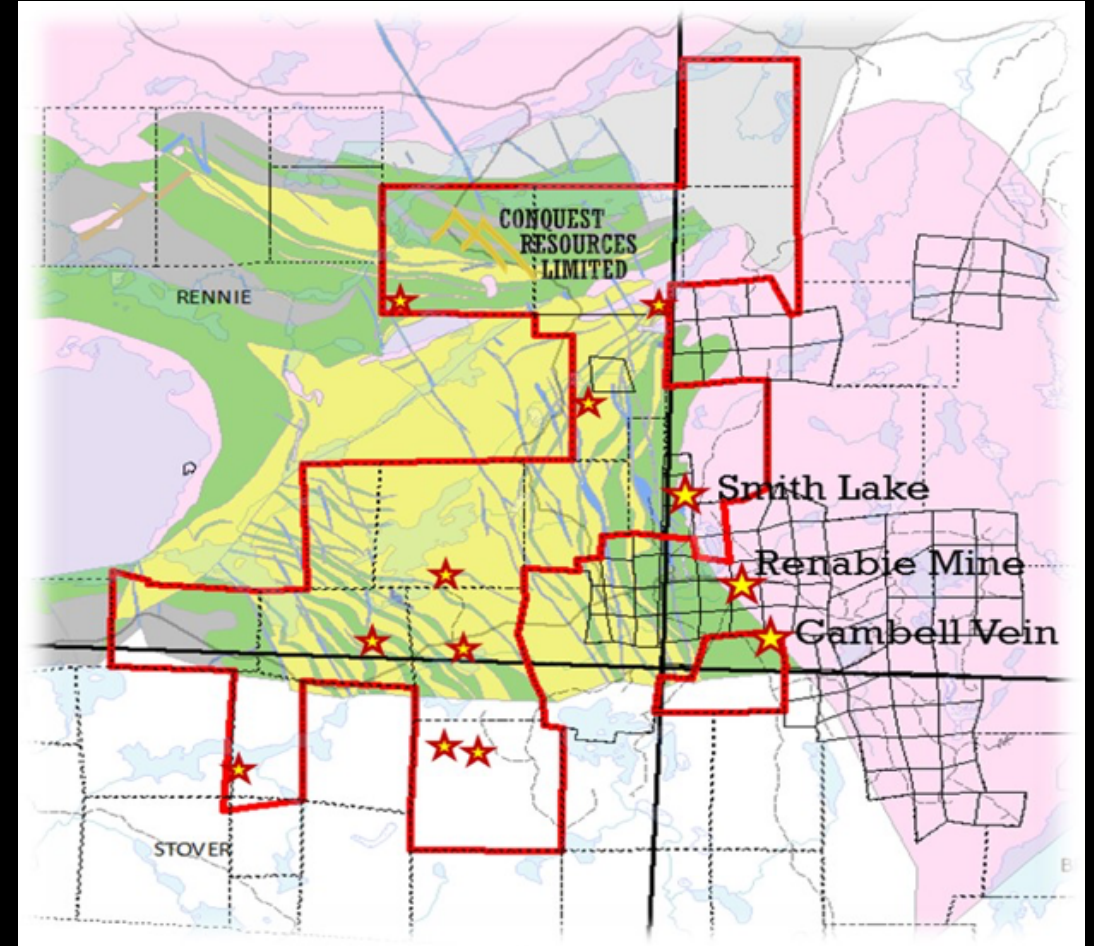
SMITH LAKE GOLD PROJECT: RENABIE, ONTARIO

UPSIDE POTENTIAL

- ❖ Conquest holds a 100% interest in 16 contiguous staked mining claims and 6 patented claims situated within the Missinabie-Goudreau greenstone belt.
- ❖ The property is contiguous with the former international Corona Resources Renabie gold mine, which produced more than 1.1M oz of gold between 1941 and 1991.
- ❖ There are thirty mineral occurrences in the immediate area of the Smith Lake Property. Thirteen of these occurrences lie within Conquest's claim group.
- ❖ Conquest's claims nearly surround the former Renabie and Nudalama gold mines, located within the Missinabie-Renabie district also known as the Wawa gold camp.
- ❖ The geology of the Missinabie area is characterized by a series of Late Archean and Precambrian aged mafic metavolcanic rocks of the Michipicoten Greenstone Belt in the Wawa subprovince.

FUTURE WORK

- ❖ Additional exploration is warranted over the east-west trending lineament areas as well as areas of geophysical interest from Conquest's EM survey
- ❖ Detailed mapping, sampling and drilling of the Campbell Vein is required to fully understand the mineral potential of the showing uncovered in 2016





TOM OBRADOVICH, PRESIDENT & CEO
TOBRADOVICH@CONQUESTRESOURCES.COM
PHONE: +1 (416)-985-7140
WWW.CONQUESTRESOURCES.COM

FRANK GAGNON, INVESTOR RELATIONS
GENERAL@CONQUESTRESOURCES.COM
PHONE: +1 (705)-288-5300
WWW.CONQUESTRESOURCES.COM

55 University Avenue, Suite 1805
Toronto, Ontario, Canada
M5J 2H7