

Conquest Resources

Exploration for High-Grade Base and Precious Metal Deposits in Canada's most prolific mining districts

Company overview

Belfast-TeckMag Property:

- At ≈350 sq. km, CQR's 100% owned Belfast-Teck Mag project is one of the largest in the under-explored Temagami Mining Camp, just 50 km from the prolific Sudbury Mining Camp
- A well-diversified exploration approach has revealed evidence of potential deposit types including magmatic Cu-Ni-PGE, VMS copper, Olympic Dam-style IOCG and BIF-hosted gold

Other properties:

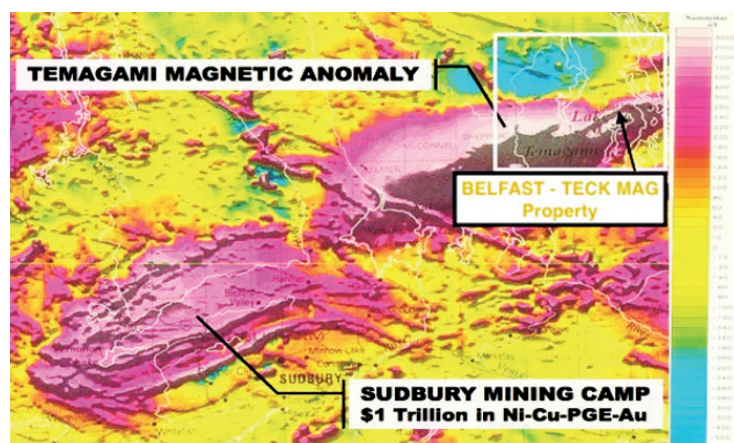
Alexander Gold: CQR holds a 100% interest in the property located immediately east of the Red Lake and Campbell mines in the heart of the Red Lake Gold camp, situated on the important "Mine Trend" regional structure

Smith Lake Gold: CQR holds a 100% interest in the property south and west of the former Renabie gold mine

Lake Nipigon Basin: CQR can earn up to a 100% interest on the property in the Quetico Gneiss Belt, which is prospective for high-grade uranium and Ni-Cu-PGE deposits

Exploring the Temagami Magnetic Anomaly

The Temagami Anomaly is a large, dense, magnetic and conductive anomaly that may be related to the Sudbury Basin, which hosts the \$1 trillion Sudbury Mining Camp (see fig CQR3).



CQR3: The Temagami Anomaly is a virtual twin of the prolific Sudbury anomaly, but has received little exploration to date.

The Temagami Mining Camp area is vastly under-explored because:

- A 20-year land caution prohibited mining activity until the late 1990s
- The area is thickly overlain by cover rocks, making CQR's geophysics focus highly appropriate for the region

Preliminary exploration by CQR in 2014 led to the discovery of a same-aged Sudbury Offset dyke, which is the host rock of most Sudbury ores

Teck Resources's Temagami/Copperfields Mine, which graded 28% Cu plus PGEs, is located within the Temagami Anomaly and along strike from CQR's property

New management

Decades of experience discovering mineral deposits domestically and internationally

Potential

Regional, methodical exploration applied to the Temagami Mining Camp area for the first time

Diversification

Exploration for magmatic Cu-Ni-PGE, VMS, IOCG and Fe hosted Au deposits

Location

Primary exploration area within the southern portion of the Abitibi Greenstone Belt & 50km from the Sudbury Mining Camp

Directors and management

Tom Obradovich, President & CEO, Director

John F. Kearney, Chairman of the Board

Jamie Levy, Director

Peter Palframan, Director

Terence N. McKillen, Director

Kevin Stevens, Chief Geophysicist

Joerg Kleinboeck, VP, Exploration

Tong Yin, CFO

Latest announcements

10/20/2021 – Conquest Discovers Cu-rich VMS system at the Belfast-TeckMag Project

09/29/2021 – Conquest Resources Prepares to Drill First of Three Large IOCG Targets on Belfast Copper Project and Secures Uranium and Ni-Cu-PGE exploration properties in the Black Sturgeon Lake Area, Nipigon, Ontario

08/19/2021– Conquest Reports Second Quarter Results 2021 and Grants Incentive Stock Options

08/18/2021– Conquest Resumes Drilling and Completes Mobile Airborne Magnetotelluric Survey

06/09/2021– Conquest Resources Begins 10,000m Phase 1 Drill Program on Belfast Copper Project and Announces Results of Annual General Meeting

Key financials (November 2021)

Recent Share Price	\$0.08
Shares Outstanding	134.6m
Market Capitalization	10.10m
Share Price: Year high-low	\$0.22-0.07

Major shareholders

Kirkland Lake Gold

Rob McEwen

Eric Sprott

Jamie Levy

Pat Dicapò

Tom Obradovich

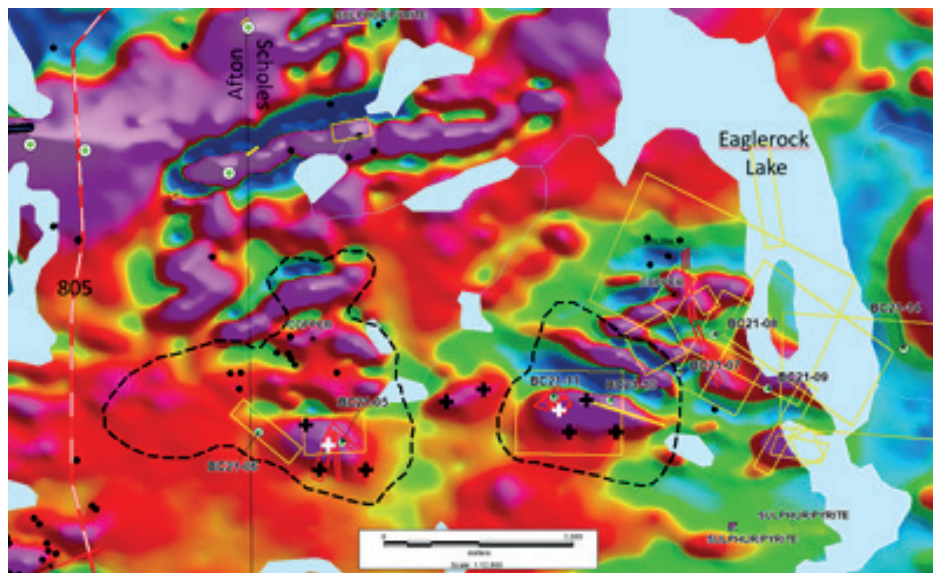
Inventus Mining

Rousseau Asset Management

Belfast-TeckMag Exploration Progress

Belfast-TeckMag Property:

- 10,000 m drill program targeting 34 geophysical targets
- 1 km-long zone of interest identified, with substantial Cu mineralisation and elevated Au
- Two drill holes intersected the anomalous VMS copper horizon within east-west oriented magnetic zones (see fig CQR5)

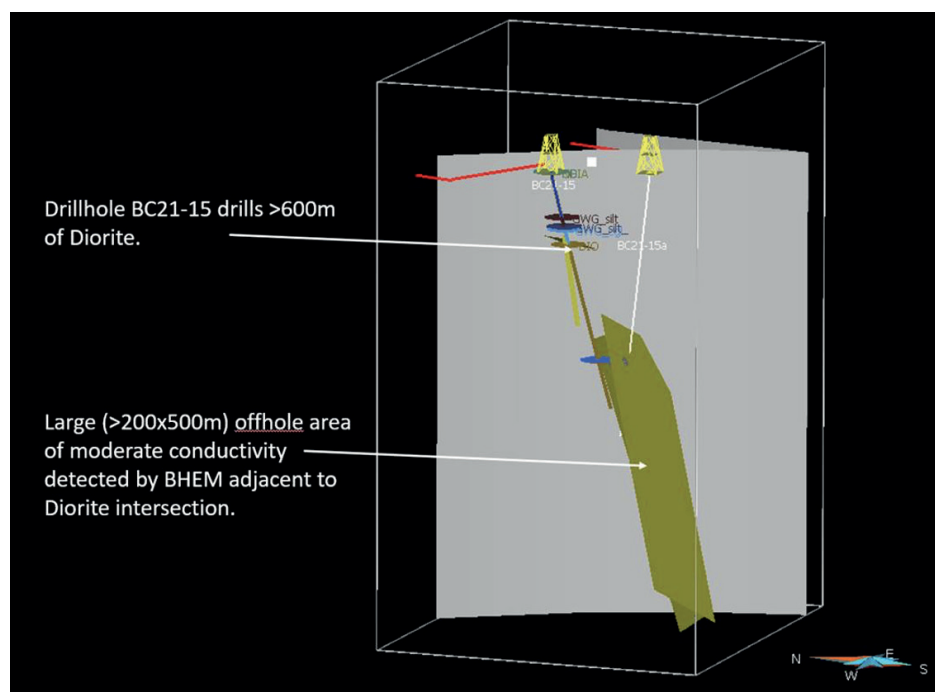


CQR5: Borehole electromagnetic surveys are being used to understand the VMS copper horizon.

- BHEM surveys detected widespread conductive, sulfide-bearing source rocks within the copper horizon

Phase II drilling campaign

- Currently targeting the copper horizon with 8-10 holes totalling ≈3,000 m at an interhole distance of 225 m (see black crosses on Fig CQR5)



Contact:

Tom Obradovich, President & CEO
 t: 416-985-7140
 e: tobradovich@conquestresources.com

Frank Gagnon, Investor Relations
 t: 705-288-5300
 e: fgagnon@conquestresources.com

Completed geophysics:

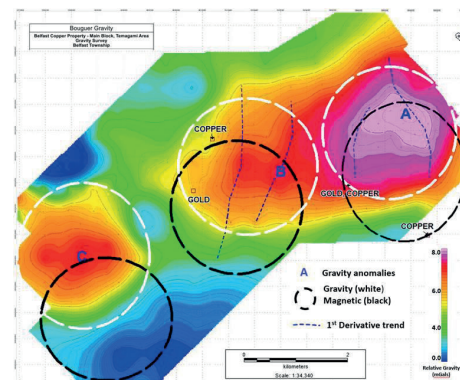
2,319 line-km
 VTEM MAX airborne survey

255-site
 ground gravity survey

155 line-km
 airborne mobile magnetotelluric survey

Geophysics results:

- Magnetic and conductive responses suggest VMS (Cu), mafic intrusive (Ni-Cu-PGE) and BIF (Au) deposit types
- Three coincident magnetic and gravity responses within a large structural corridor show potential for an Olympic Dam-style IOCG deposit, supported by a significant Cu-Au-hematite occurrence



CQR1: Overlapping gravity and magnetic anomalies plus specific mineral occurrences are suggestive of an Olympic Dam-style IOCG deposit.

- VTEM survey identified 34 geophysical targets, all on strike with Teck Resources’s Copperfields Mine



CQR6: Phase II drilling is underway on the Belfast-Teck Mag property.